

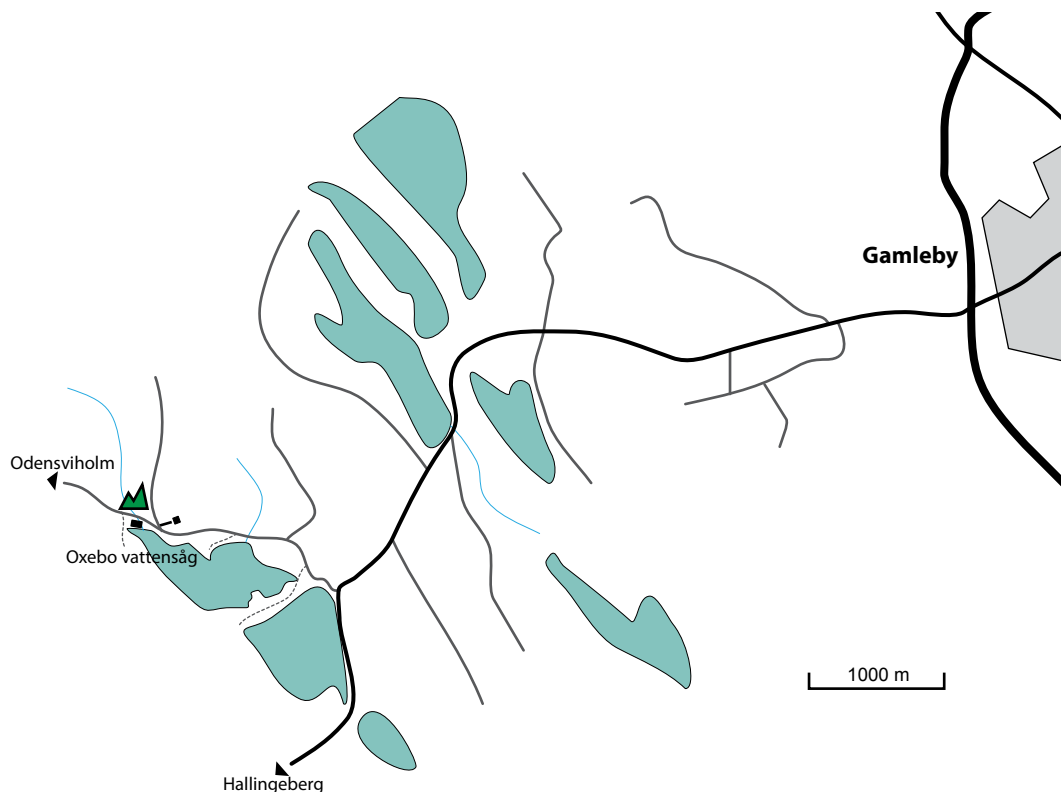
Gröna väggen

Karakteristik

Green wall is a steep and bulging wall of finegrained granite that houses many problems of high quality. The wall is south facing in the picturesque setting right next to Oxebo water sawmill.

Directions

Green wall is located 8 km west of Gamleby. At Gamlebys South exit, exit E22 towards Hallingeberg. After 6.2 km turn right towards Odensvi Holm. The road turns to gravel road and 1.8 km after the turning Oxebo water sawmill pops up on the left side. Green wall is 50 meters ahead on the opposite side of the road. Park here.



Coordinates

To the parking lot: 16°16'73"O, 57°52'54"N

Accommodation

Closest camping is Camping KustCamp, phone +46493-10221, www.campa.se. Eight Little Homes Youth Hostel in Överum, phone +46493-30302 www.overum.nu, Lysingsbadet in Västervik, phone +46490-258000, www.lysingsbadet.se. You can rent cottages at Tofvehult, phone +46490-26351 www.tofvehult.se, Live in Nature at Kallernäs gård, +46768-513090 www.liveinnature.se and Risebo fritid, phone +46493-33046 www.risebofritid.se.

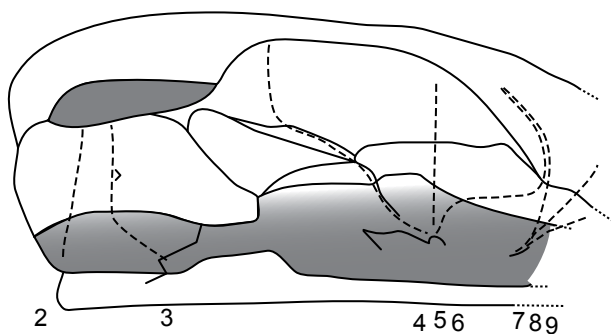
Shops

The closest grocery stores and petrol stations are located in Gamleby.

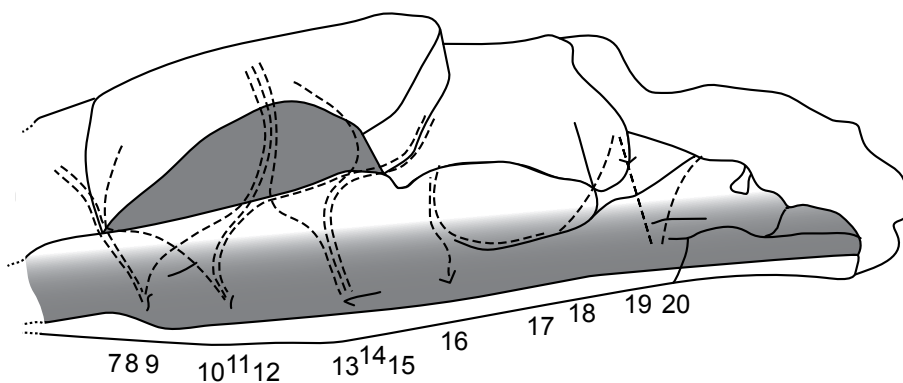
Västervik Climbing Centre

The climbing centre in Västervik is the main meeting point for climbers. It is located by the old water tower on Repslagargatan 5. There is free Wi-Fi internet access there. You can also borrow a computer and browse the internet for free. It is a place where you can meet, trade stories, read climbing magazines and watch climbing films. The latest information on climbing and other outdoor activities in the area is available there. There is also a climbing gym available, where you can climb and get to know other climbers. Call +46490-37466 for more information.

Gröna väggen



1	?			
2	Projekt			
3	Board Lord	7C	Sittstart	<i>Stefan Rasmussen</i>
4	Mapei	6A	Sittstart	
5	Siam	7C+	Sittstart. Rakt upp	<i>Stefan Rasmussen</i>
6	Eufori	7C	Sittstart. Dynamiskt till stor pinch.	<i>Stefan Rasmussen</i>
7	Dr Hook	7B	Sittstart	<i>Stefan Rasmussen</i>
8	Projekt			
9	Radiohead	7C+	Sittstart. Se nedre skissen	<i>Stefan Rasmussen</i>



	7, 8		Se övre skissen	
9	Radiohead	7C+	Sittstart, klättra höger.	<i>Stefan Rasmussen</i>
10	Green Wave	8A+	Sittstart, klättra vänster.	
11	Mean Green	8A+	Sittstart, rakt upp.	<i>Stefan Rasmussen</i>
12	Mr Green	8A+	Sittstart, klättra höger, topp i Tremor.	<i>Stefan Rasmussen</i>
13	Tremor Krist	7C	Sittstart	<i>Stefan Rasmussen</i>
14	High Tremor	7C	Sittstart	<i>Stefan Rasmussen</i>
15	Tremor	7B	Sittstart	<i>Johan Edman</i>
16	Gröna Lanternan	7B	Sittstart i undertag, rakt upp.	<i>Jimmy Karlsson</i>
17	Hypo	7B	Sittstart, klättra vänster.	<i>Stefan Rasmussen</i>
18	Tunnelsyndrom	6C+	Sittstart	
19	Breaking Good	6B	Sittstart	<i>Jim Wasmuth</i>
20	Breaking Bad	6B	Sittstart	<i>Jim Wasmuth</i>

Grader och leder	medelsvår	svår	mycket svår	extremt svår	extremt svår		
grader	3a-c	4a-c	5a-c	6a-c	7a-c	8a-c	summa
	-	-	-	4	11	3	18